



CIVIL & INDUSTRIAL CONSTRUCTION

- MINES**
- CHEMICAL PLANTS**
- RAILWAY TERMINALS**
- MARINE BASES**
- BUSINESS CENTRES**
- RETAIL CENTERS**
- TOURIST RESORTS**
- HOTELS**
- HOUSING ESTATES**
- SCHOOLS**
- TRANSPORT FACILITIES AND INFRASTRUCTURE**

About EcoSocio Analysts

Established in 2014 EcoSocio Analysts LLC (ESA) is a successor of CaspiEcology Environmental Services formed in 2001. We provide full spectrum of health, safety, environmental and socioeconomic services including HSE due diligence, impact assessment, management systems and monitoring; stakeholder engagement, information disclosure, resettlement and livelihood restoration, contamination assessment, cleanup, revegetation and waste management. We communicate and produce reports in the required language be so the English, Russian or Kazakh.

Our blend of western education with local experience has allowed us to provide commendable work for the international lending organizations like the HSBC, EBRD and IFC and the companies that apply for their loans or for listing on the London Stock Exchange. When we lack specific experience for a project we join with our long-term partners from UK, Germany, Italy, Spain and other countries as well as contract international free-lance experts. This allows us to accumulate experience in practically all industrial sectors present in the Central Asia despite specialisation on the international investors.

See www.EcoSocioAnalysts.kz for **Statement of Qualifications**.

ESA is licensed to conduct audits and present and defend its finding in a Kazakhstan court of law.

CIVIL & INDUSTRIAL CONSTRUCTION EXPERIENCE IN KAZAKHSTAN



Answering Questions for the Sectors We are Experienced in



- Do I need environmental help at the planning stage?
- What kind of surveys are needed?
- Do I need to consider social impacts as well?
- What are Equator Principles?
- What is sustainability and should I consider it?



- Are there environmental or health and safety risks?
- How do I handle relocations to avoid unplanned costs or delays?



- Are there legacies of contamination associated with the site?
- Why do I need an environmental consultant?
- Is monitoring of the construction required? If so, what kind?



- Will my responsibilities end when construction is finished?
- Is further environmental management needed?
- Will I need an Environmental Management Plan?



It is hard to prove in the court that contamination or hazardous waste burial is responsibility of the early owner or neighbor. The new owner has to cleanup and pay a fine that equals to the cleanup cost that is either calculated by the environmental authorities using a simplified indirect method or derived from a cleanup plan produced by a certified consultant and approved by the authorities. These authorities can also stop part of the whole operation until the identified contamination is eliminated. Environmental non-compliance can be used by the government as a tool to enforce its objectives.

What to Do to Minimise Risk?

To make a decision on a loan or listing the company on e.g. the London AIM, the international lending institutions require a reputable environmental company to conduct the following work:

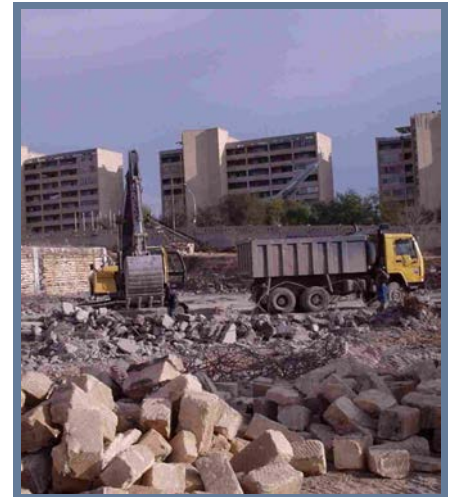
Environmental and social impact assessment (ESIA) is conducted for the EBRD Category A projects. In Kazakhstan the assessment includes a Declaration of Intent, a Preliminary EIA at feasibility study stage, and an EIA for detailed design. These data provide solutions for the prevention of adverse impacts on the environment and people.

Environmental and social impact assessment (cont.) At the ESIA stage the gaps in the previous studies are identified and a plan is developed to fill them.

Health, safety, social and environmental due diligence and assessment is conducted for the EBRD Category B projects and involve audit of the loan affected part of the existing operation and the planned activity impact evaluation. At this stage the local EIA is also analysed for gaps but the gaps are filled only for significant aspects of impact.

Environmental Management System is developed in Kazakhstan at the EIA stage in the form of an operational ecological control plan to obtain the Emission Permit that allows to start construction. To ensure international financing, an Environmental and Social Action Plan (ESAP). Once the construction begins, monitoring takes place to validate predicted by the ESIA impacts significance and effectiveness of suggested by the ESAP measures. The Category A projects ESAP implementation is to be checked once or twice a year by an independent bank approved consultant.

Stakeholder Engagement is an obligatory process that should start at an early stage and continues in a systematic manner for the duration of the project or the loan. In contrast with the Kazakhstan requirements, when only the stakeholders that are directly negatively affected by the development must be informed, the EBRD and IFC standards include persons or groups that are also indirectly affected (positively or negatively) by the project and generated by it activities or have interests in the project or the developer or have the potential to influence project outcomes or the developer operations or contribute to the work due to their expert knowledge of and/or experience in the region. These standards also require engagement rather than just informing the identified stakeholders and paying specific attention to the groups who, by virtue of gender, ethnicity, age, physical or mental disability, economic disadvantage or social status may be more adversely affected by



Liability for old contamination during Renaissance Hotel construction in Aktau



Reconstruction of a polyaramid plant in Kostanay faced social commitments



Opornaya gas compressor station shop demolition staff health hazard from asbestos containing waste



Old residences at Satpaeva Mixed use complex, Almaty required resettlement

INDUSTRY

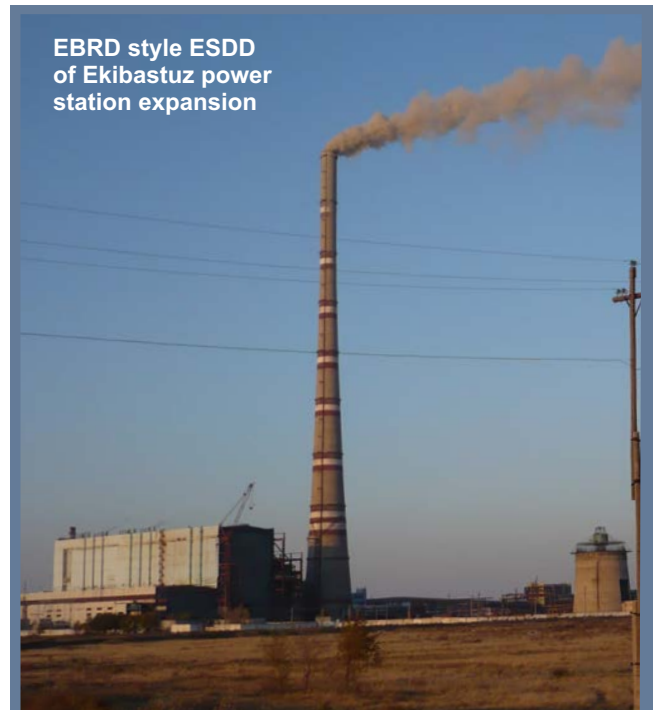


HSE and Social Due Diligence for an EBRD Category A rated project. After a 10-year clean-up and containment conducted by the Government at one of the largest chemical plants in the former Soviet Union Pavlodar Chemical Plant, EcoSocio Analysts, together with a European contractor, assured an EBRD loan for JSC Caustic's **caustic soda plant** construction.

Apart from the ESDD the team task was to assist with public consultation and prepare the ESIA disclosure package that included **Public Consultation and Disclosure Plan**.

Environmental, Health, Safety and Social Due Diligence of the Central Asian Electric Power Company (CAEPCO) that operates combined heat and power stations and distributes power. EcoSocio Analysts assessed how the corporate and site activities meet the requirements of EBRD, the **Islamic Development Bank** and the **Islamic Infrastructure Fund** Environmental and Social Management System which is based on the environmental and social safeguard requirements of the **Asian Development Bank**.

Delivery of the audit expectations included a corporate EHSS audit to assess the adequacy of the Company's corporate environmental, social, health and safety policies, procedures and management systems.



EBRD style ESDD of Ekibastuz power station expansion



ShymkentCement change to dry production significantly reduced environmental impact and resources consumption and improved safety

ShymkentCement (Italcementi Group) Wet to Dry Operation Change ESDD for EBRD with MWH Global PLC. The audit focused on the existing operation HSE and social impact and its implication to the planned development. Energy and resources use and air emissions per unit production was given particular attention. Encroachment of illegal settlers into the plant Sanitary Protection Zone had to be dealt with. The project team also helped with ES analysis, ESAP and SEP.



As a result of investigation of phenols pathways their concentration in the Philip-Morris Almaty plant effluents could be brought to compliance



Audit of Weatherford bases in Aktau and Zhanazhol: isotopes storage control



Kazneftekhim EBRD style DUE DILIGENCE under EBRD requirements for 2 oil terminals, 2 oil fields and 1 polymerization plant

INDUSTRY

Sulphuric Acid Workshop Construction at the Mineral Fertilizers Plant of Kazphosphate LLC, Taraz. HSBC financing. STAKEHOLDER ENGAGEMENT following IFC and International standards.

The assignment included house-to-house surveys, interviewing the project stakeholders and focus groups meetings in the affected residential areas. An internet forum was created for the project to involve non local stakeholders and provide the mean of control over the process in a real time. The client's staff was trained to handle the grievances and to monitor the mechanism effectiveness.



Vulnerable groups engagement: the extradicted from Crimea tatar community suffers from the chemical plant tailing dust and fears increase in impact



The 18th century village founded to develop this gold deposit had to be protected from flying rocks and earthquakes resulted from the increased blasting power.

EBRD ESAP Implementation for Sekisovskaya GOLD MINE

Gaps in existing environmental information were filled by assessing the mines impact on terrestrial and water flora and fauna (including invertebrates), and local community health, safety and security. Based on these data and with the intention of transferring the operation from the open pit to underground, the project team prepared:

- Biodiversity Remedial Action Plan
- Workers and Contactors Housing Strategy,
- Land Acquisition and Resettlement Policy and Retrenchment Plan

Anode production facility at Pavlodar Aluminum Smelter Plant of the Eurasian Natural Resources Corporation PLC. ENVIRONMENTAL ANALYSIS following IFC and International standards.

CaspiEcology assessed:

- The plant compliance with the local legislative requirements, the Equator Principles, IFC Guidelines and EU Brief for Base Metal Smelting and Refining was assessed.
- The new facility design impact and its adherence to the Best Available Technique Principle.



Opornaya GAS COMPRESSOR STATION Shop 4 pre-EIA and ESIA for MAN Turbo



EBRD style ESDD and ESA of MOBY BOAT YARD Construction

ArcelorMittal Temirtau Steel Works Reconstruction. EBRD style ENVIRONMENTAL AND SOCIAL ANALYSIS

Together with a European contractor CaspiEcology identified gaps in available data and in compliance and assessed water supply and discharge system.

Balkhash Thermal Power Plant Environmental and Social Analysis for Samsung. CE helped its international partner to assure compliance of the plant with the Equator Principles and to obtain funding from international banks.

INDUSTRY

Environmental and Social Baseline Study for Satimola Borate Mine Construction, for Hambleton Mining (UK) The study was implemented by CE according to the requirements of Kazakhstan legislation and world practices as the first stage of the EIA process. In addition to describing the natural, social and economic environment in the area the study determines the possible environmental impacts as a result of the Satimola borate field development.

Socio-Economic Assessment for Shevchenkovskaya Ferronickel Mine and Smelting Plant reopening, for Oreal Resources with Wardell Armstrong International using IFC Standards, Over 50 000 population of 19 villages around the project territory, who depended on the mine and the plant in the past directly or indirectly, were engaged in the project discussion. The impact of the mine and plant opening on the existing **asbestos** and **gold** mines was evaluated. Participative Rural Assessment and Autodidactic Learning for Sustainability methods were used. Interviews focused on identification of social problems, vulnerable groups and criteria for evaluation of livelihood alteration by the project.



Safety issues at the ZhambylGips rock crusher

Socio-economic assessment of Inder Community for Satimola Borate Mine (Humbleton Mining PLC) development according the Equator Principles

HSE and Social Due Diligence of a Gypsum and Marble Extracting and Construction Material Producing Company Zhambyl Gips, Taraz for ADM Capital (FI of EBRD). The prepared action plan allowed the company to avoid costly relocation of its oil gypsum binding and calcination facilities. Suggested measures would cost-effectively cut gypsum dust spreading to the neighboring residential area and improve working conditions to the extent that high staff rotation can be stopped.

Environmental and Social Due Diligence for the EBRD project on Kyzylorda Public Transport System Modernization including construction of a depot and procurement of up to 100 compressed natural gas busses, 2013. Together with the Arup PLC team, which conducted the technical, legal and financial evaluation, CE defined the existing public transport problems and risks related to the depot construction on the former district heating plant territory. The social work included polling the key stakeholders and vulnerable groups within the public transport passengers.



Protection of heritage from damage during mine tailings construction



Assessment of impact on wildlife and groundwater from construction of the mine tailing pond in the natural depression (sor)



ExxonMobil Offshore Drilling Rig
Study of Effluents Quality and Reuse/Disposal Options, 2010-2011

AGIP North Caspian Base
EIA, Contamination Assessment, 2002

Atash Marine Base
ESIA, EMS, Monitoring, Compliance, Resettlement to EBRD standards 2007-2010

McDermott Bautino Fabrication Yard
EIA, 2010

Halliburton Mud Plant
Pre EIA and EIA, 2008-2009

Caspian Sea Shore Impact and Sensitivity Study
2002

AGIP On-shore and Off-shore Monitoring
2003-2007

Kultuk Oil Field Development
Legislation Review 2008

BMG Ayrshagyl Oil Field Contamination Assessment
2010



AGIP NCB EIA and ground contamination sampling



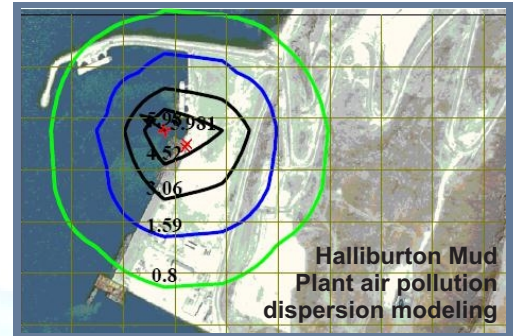
Atash Marine Base construction noise monitoring



AGIP KCO insects monitoring



Bautino baseline sampling planning and implementation



Halliburton Mud Plant air pollution dispersion modeling



Ayrshagyl oil field contamination assessment



Caspian Sea shore sensitivity map

Mangystau Oblast Boat Yard (MOBY)
ES audit and analysis 2008-2011
Monitoring to EBRD Standards



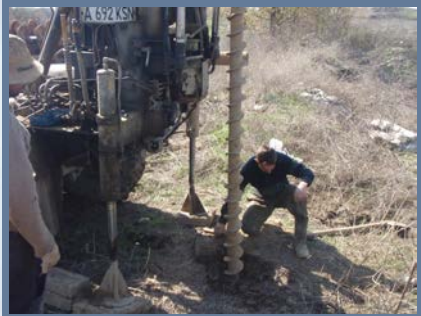
Environmental analysis and Audit for the Mangystau Oblast BOAT YARD

RETAIL

When **METRO**, the world's 3rd largest retailer, chose to increase its market in Kazakhstan - it approached us to do its environmental work.



Metro Shymkent - land squatters



Metro Almaty - closed city dump



Metro Karaganda - old air strtip

Environmental Due Diligence (Phases 1 and 2) of 9 sites for the construction of large retail developments in the main commercial centers of Kazakhstan (e.g. Almaty, Karaganda, Shymkent). ESA worked with the other contractors during 2009-2011 on a variety of sites including an old municipal waste dump, a helicopter plant, two vehicle markets, a former airport area, a trolleybus repair plant with a petrol station, a flood plain and an agricultural field.

The work included installation of permanent groundwater monitoring wells according to international requirements and the comprehensive sampling and analysis of soil, ground (to 5m depth) and groundwater. Among others, analyses were conducted for VOC, PAH, PCBs, EOX/CHC and CFC. Reports, produced in a very tight schedule, minimized financial and reputation risks associated with land contamination and suggested practicable and cost effective remediation measures. These costs could be offset against the land value.



Finished wellhead

German made PVC pipes with 0.2mm filter slots were essential in fine sediment ground



Metro Atyrau old helicopter plant



Metro Pavlodar - old petrol stations and flood risk

Client comment:

"Regardless of the tight timelines required, each of these sites was investigated thoroughly and the results presented in good quality, clear reports reviewed by our European and local managers. The work allowed us to help select environmentally sound locations and expand our business accordingly. Thank you for their good effort and hope to continue to work with them in the coming years."

Director, "METRO Cash and Carry" LLP

Metro Almaty - chrome and zink in the ground under the demolished galvanizing shop of the former trolleybus repair plant



Sampling for contamination to 5m depth at an old petrol station

HOSPITALITY, RESIDENTIAL AND RECREATIONAL FACILITIES

Accounting for land squatters during ESDD of Kalkaman Apartment Complex Development, Almaty



Stakeholders identification and engagement is the most important aspect in control of risks associated with construction in urban environments or in the areas initially used by the general public for traditional recreation. ESA handles resettlement and livelihood restoration in an internationally accepted manner be this for the land squatters common around the cities or the original population that is denied access to a common resource or the neighboring business which profit may be affected by the development.

BREEAM Certification of St. Regis Hotel, Central Park, Astana. Ecological, Traffic and Flood Risk Assessment



- Satpaeva MIXED-USE COMPLEX
- Baganashyl HOUSING ESTATE
- Navoi high end COTTAGE ESTATE
- Kapchagay RESIDENCES AND RESORT
- Al Farabi RESIDENTIAL towers
- Al Farabi BUSINESS CENTRE
- Kalkaman APPARTMENT COMPLEX

Another important issue is reducing the developments resources use and impact on public health and safety, urban infrastructure and environment. ESA contributed to it through preparation of such developments for certification of the BREEAM standard. for sustainability in construction

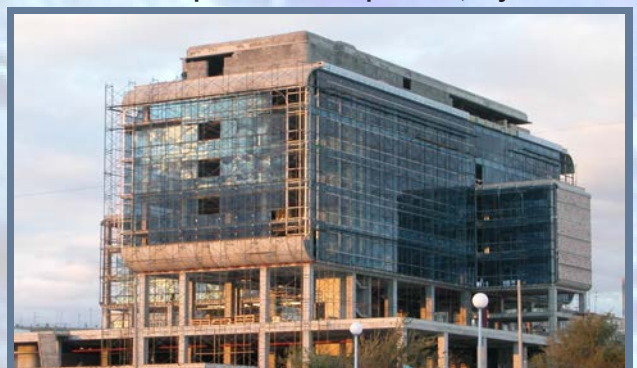


ESDD of 7 developments in Almaty prepared for Submission to AIM of the London Stock Exchange

Apartments complex EIA, Atyrau



Atyrau Renaissance Hotel ESDD



ESDD and EIA for Renaissance HOTEL; Aktau

HOSPITALITY AND RECREATIONAL FACILITIES

Kok Zhailau Ski Resort preEIA

As part of the international team of the mountain planners (**Ecosign**), civil engineers (**Arup**), economists (**Howath and KPMG**) and natural hazard management specialists (**Engineerisk**) ESA specialists participated in development of the resort master plan by providing environmental and social support and preparing preliminary EIA for this part of the National Nature Park. To evaluate alternatives for the project, the 420 km² and 6 other potential ski areas were studied.

The project was nominated for **2012 American Chamber of Commerce in Kazakhstan Environmental Health and Safety Award**



Natural hazards were accounted and managed

Examining Lift 11 top terminal slopes at 3430m

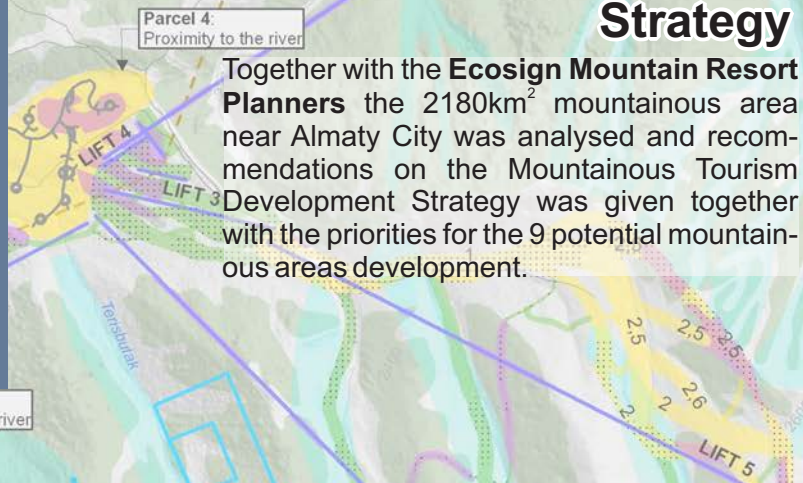


Fragments of Environmental Sensitivity and Constraints maps

Almaty Ski Tourism Development Strategy

Together with the **Ecosign Mountain Resort Planners** the 2180km² mountainous area near Almaty City was analysed and recommendations on the Mountainous Tourism Development Strategy was given together with the priorities for the 9 potential mountainous areas development.

Big Almaty Lake area was attractive for development but had significant environmental constraints



Medeo & Chimbulak ESIA & EMS

This world class project was designed to meet the standards of international tourism, the 2011 Asian Winter Games and, in perspective, the Winter Olympics. For this reason, the environmental and social sustainability aspects of the project were given top priority. The project team worked in close interface with highly respected international architects (**HOK, RAMSA**), engineers (**Arup, KINETIC**), mountain planners (**Ecosign**), transport specialists (**Colin Buchanan, Doppelmayer**), and business consultants (**Coilers International, Locum Consulting, Landbase Development and Interbrand**) to provide environmental and social support during detailed design and prepare ESIA report.



The design accepted the internationally recognised sustainability standards

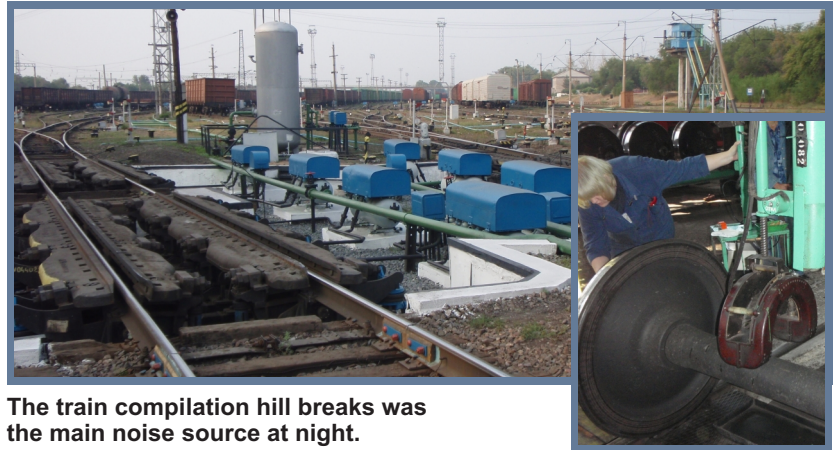
TRANSPORT FACILITIES

HSE and Social DD of Kaztemirtrans (KTT) and 3 depots that service the company wagons, Client EBRD. This Category B project was finished in just over a month time which allowed EBRD to proceed with the loan in a scheduled manner .

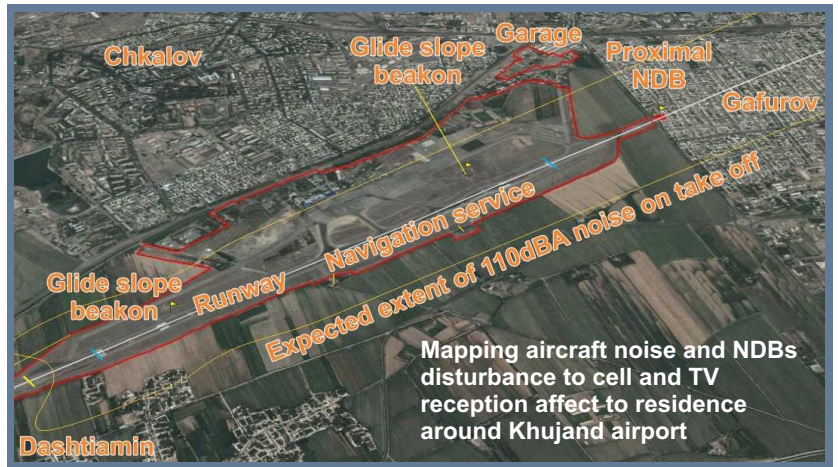
Khujand International Airport Modernisation ESDD, ES Analyses and SEP, Client EBRD, Tajikistan. Originally built to deliver the first Soviet nuclear bomb, the airport aims to become an international hub by bringing landing and takeoff safety to the required level. The work concentrated on assessment of impact on the housing and illegal settlements that gradually surrounded the airport, the construction material supply routes, workers health and the groundwater. A cost effective mechanism to monitor impact from aircraft noise and their physical presence on adjacent households was suggested.

Somoni Avenue Reconstruction ES Analysis and SEP, Client EBRD, Dushanbe, Tajikistan. The bank considered a loan to Tajikistan Government to reduce congestions along the international road routes through Dushanbe. The environmental analysis included traffic flow and air pollution modeling projected 10 years ahead. To identify whether resettlement was required and to account for stakeholder's opinion, the project team polled residents and conducted a census and focus group interviews among the avenue residents, public institutions and businesses. The resulting environmental and social action plan suggested specific cost effective measures for improving safety for the avenue crossing and reduction of impact on drivers and residents during construction. Local communication and consultation material were in Tajik and Russian.

Shymkent-Tashkent Highway km742-804.2 ES Analysis, SEP and Resettlement Action Plan, Client EBRD. The project concentrated on ensuring safe road crossing by schoolchildren, elderly and animals, on adequate irrigation water supply and on the local population access to the road during construction. An important challenge was resettling the large number of curb traders from the road right of way to a safe place without jeopardising their living conditions and income.



The train compilation hill breaks was the main noise source at night.



Mapping aircraft noise and NDBs disturbance to cell and TV reception affect to residence around Khujand airport

Somoni Avenue residents sensus and discussion of engagement mechanism. Children safe crossing was the main issue



Curb traders - the major Shymkent road safety issue



AGRICULTURAL BUSINESS



Modern high capacity flour mills made space available in the elevators for small farmers harvest



Port Facilities

ESDD of JSC KazExportAstyk (KEA) For EBRD

This integrated agro-industrial holding, is the 3rd largest grain trader in Kazakhstan. It works with 23 partner farms in Kazakhstan to whom they supply the required machinery and know-how.

Assessment of the headquarters policies, plans and procedures and environmental, health and safety and labour protection conditions at numerous sites with operation ranging from growing of various cereals, production of milk, flour, meat and meat products to products storage, transportation and retail. Preparation of a ESAP and SEP. This audit performed without western specialists at a very short notice earned high praise of the client for the content and timing.

Changing from grain warehouse storage to automated silos reduced waste and improved hygiene and working conditions

EBRD Comment: ...thanks very much for your work on this project – we are pleased with the results and look forward to working with you again in the future.

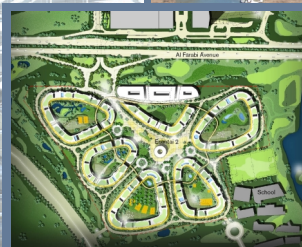
OFFICES, SCHOOLS, LABS



LABORATORY FACILITY with instrumentation for UzenMunayGas



Noise and traffic survey for Haileybury SCHOOL EIA, Almaty



Almaty FINANCIAL CENTER EIAs and Environmental protection chapters for 5 complexes (Kazkommersebank, Alliance, Turan, B and C) addressed shortage of heat and power in the area.





European Bank for Reconstruction and Development

EBRD (Senior environmental advisors)

- 1) What a heroic effort turning this around so quickly, thanks!!
- 2) "...As a result of our meeting, the references you sent about the experts and my review of the Atash Marine Base EIA. I can say there will not be a need for a Gap Analysis by an external party."
- 3) "I am very pleased to hear that you will be monitoring the project implementation. As I have always said I had been very pleased with the quality of your work and your cooperation during the EDD. I hope our close relation will continue during the implementation stage."
- 4) "I reviewed the Resettlement Action Plan... you have done a very good job on it!!".
- 5) "The overall quality of the work done is very good. Nicely written in a concise manner, but without omitting important details".



Ministry of Environmental Protection Office, Kyzyl Orda (Head of the State Environmental Expertise)

"We would like to note the high professionalism and quality of the project and analytical data of the prepared **cleanup and recultivation plan**. The

cleanup methods screening, accounting for all positive and negative aspects and the cost-benefit analysis for each screened method particularly impressed me. I hope that the diligence and professionalism of your specialists will serve for the welfare of our Republic and the health of the people of Kazakhstan. Thank you."

Regional Center in Central Asia (CAREC) (Director)

"...thanks for your cooperation and support of sub-regional seminar on **"Strengthening of the Central Asia countries potential in the Assessment of Environmental Impact in transboundary context"**. Your contribution has made the seminar useful in a practical manner.



Price-WaterhouseCoopers (Project Manager)

"... very pleased with **Assessment of Risk from Environmental Regulations** you did..." The work was used for technical assistance to three major Kazakhstan banks that were reviewed by EBRD as financial intermediary.



Datoba Construction LLP (Director)

"We appreciate the special effort you put into its work, its ability to communicate and respond to the particularly demanding issues associated with construction work. Datoba is **happy to include you in all our related work** from extensive **high-level international projects for companies like McDermott and Halliburton** to projects associated with local construction firms and related laws and regulation of Kazakhstan."



ILF GmbH (Senior Consultant)

"Thank you for the fine preEIA for the **Crude Oil Pipeline Kenkiyak-Atyrau** (which) is very impressive with special regards to the data collected, the evaluation of the results... and the professional interpretation and handling of the environmental issues addresses. To **accomplish** such work in the **short period** available denotes the **highest praise**."



THE World Bank (Lead Economist and Lead Energy Specialist)

"...We appreciate the significant progress that has been made in a **pilot cleanup and oil recovery** (under the Uzen oil field rehabilitation project loan supported by the government of Kazakhstan) and note that it is in keeping with the Bank's policy of sustainable development and promotion of social development."



Agip KCO OKIOC(Agip KCO) (HSE Manager Greg Cresswell)

"... prepared for the MENR the **Review of the North Caspian Sea Exploration Project EIA** is a very constructive tool for implementing exploration drilling. Because of the **exceptional quality** and usefulness of this product, OKIOC accepts and commits to implement all your comments to improve the Project."



UzenMunayGas (Environmental Project Coordinator)

"Together with Ecology & Environment, Inc (USA) your team did a superior job in completing an **environmental audit** on a portion of the Uzenmunaigas oil field that was significantly complex in nature and contaminated from variety of sources. I understand the regional environmental authorities proclaimed it to be **'...the best environmental study they have ever seen'**. Professional work of this nature deserves to be complemented and I am happy to do so".



ENVIRON Environ, UK (Senior Consultant)

"I am very happy indeed with you helping in **audit of 2 oil terminals, 2 oil fields and a chemical plant** and will always contact you when we get future projects in Kazakhstan... **EBRD sounds delighted** with our tenacity."



ATKINS WS Atkins (Associate Water and Environment)

"I would like to thank you for all your efforts in undertaking the **audit** and generating the report, which was **received very well by EBRD**. It was an **achievement to meet the very tight timescales** on this one."



Roxi Petroleum (COO)

"**Great job!** The **due diligence** reports you compiled on each of seven of our oil fields **met all requirements of the Alternate Investment**

Market (AIM) as well as our investors. The **ESIA** was equally appreciated by our team as is your oil field **microbiological remediation** efforts. We hope we can continue to work with you into the future."



Balykshi, a subsidiary of Caspian Services (Director)

"Thank you for providing continuous and **very reliable services** to our development company for the past two years. Your ability to solve problems, work with local people and organizations like the European Bank of Reconstruction and Development (EBRD) is commendable. We hope we will be able to work together for many years to come."



UNECE Convention on Environmental Impact Assessment (Secretary Wiecher Schrage speech at the subregional Seminar for Central Asian Countries). "...the **Medeu and Shymbulak EIA has been carried out up-to-the-mark** and in

accordance with the scale of the project. I understand that it was not easy to approve the EIA with all authorized agencies, but **I can see the high level of the job performed**. Such an example testifies that EIA procedures are available in Kazakhstan, and they are applied properly. By the example of the Project, we saw both a complete chain of the environmental assessment, and subsequent monitoring of the implementation of the planned environmental measures as well."



Kazakhstan International Bureau on Human Rights (Inara Aldybayeva).

"It is important to note that the public consultations for Atash Base construction were conducted critically and professionally using an individual approach for each family to be relocated...Being responsible for resettlement, you have strictly followed the regulations of national legislation and the EBRD environmental and social policies ..."



WALSH Environmental for Kerr-McGee

Oil & Gas Corporation (Field Manager)

Environmental Scientists and Engineers, LLC

...Highly pleased with the work on **Environmental Audit of Arman Oil Field** you have performed."



Almaty Financial District LLC (General Director) "My gratitude for the **high quality of the Environmental Protection Chapters** made in required time. I learned that your

highly professional specialists are able to cope with high complexity and demands of the modern industry."



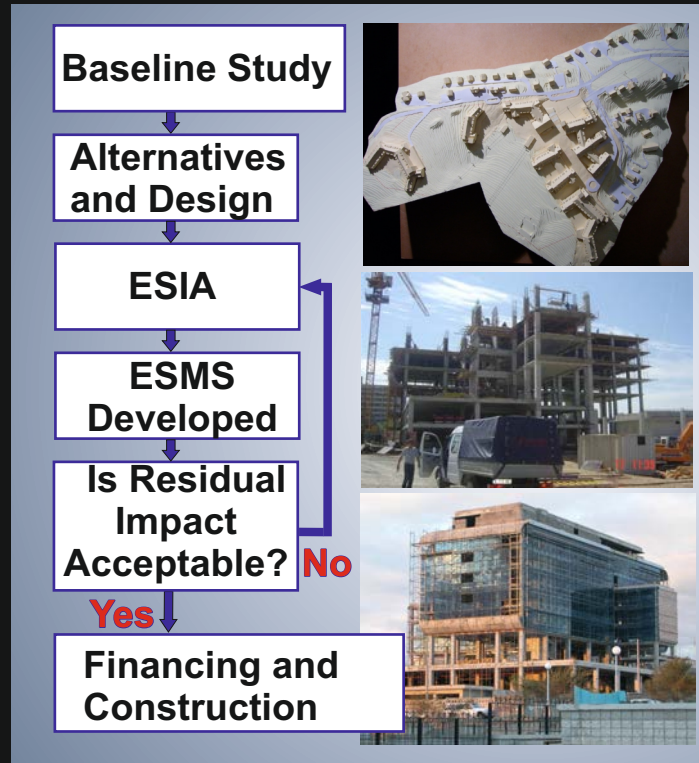
Golder Associates UK (Regional Manager)

"We would like to say a very big thank you for your quick turn around time on translations and all your help and input to **EBRD Tender for HS Management in Mining** (Kazakhstan). Your team's efficiency really made things so much easier for us. Maarten says you can have a pint on him!"



(Director) "Your **review of Kashagan Experimental Programme Pre-EIA Addendum** was well thought out and presented. I fully **intend to recommend your comments** to be accepted by our clients, the Ministry of Ecology and Natural Resources, RoK and be acted upon by AgipKCO."

WHAT NEXT?
 Call us for
Environmental Consultation



Sustainable Development and the EIA Process, what does it mean?

Sustainable development (SD) refers to development that meets the present needs of people without compromising the ability to meet future needs. According to the laws of many countries, this can be accomplished by performing an environmental impact assessment (EIA) (Fig. 1) on what you intend to develop be it an oil field, office building or whatever. See *Journal of Oil & Gas of Kazakhstan*; No 1, 2008.

See www.EcoSocioAnalysts.kz for Statement of Qualifications and other brochures:

- Socioeconomic Assessment and Stakeholder Engagement
- Contamination Assessment and Remediation
- Monitoring, Surveys and Investigations
- Environmental Management
- Energy and Energy Sources

Almaty, 132 Kabanbay batyr Street, office 213
 Tel: +7 (707) 127-37-47
 Email: VMerkuryev@EcoSocioAnalysts.kz
www.EcoSocioAnalysts.kz